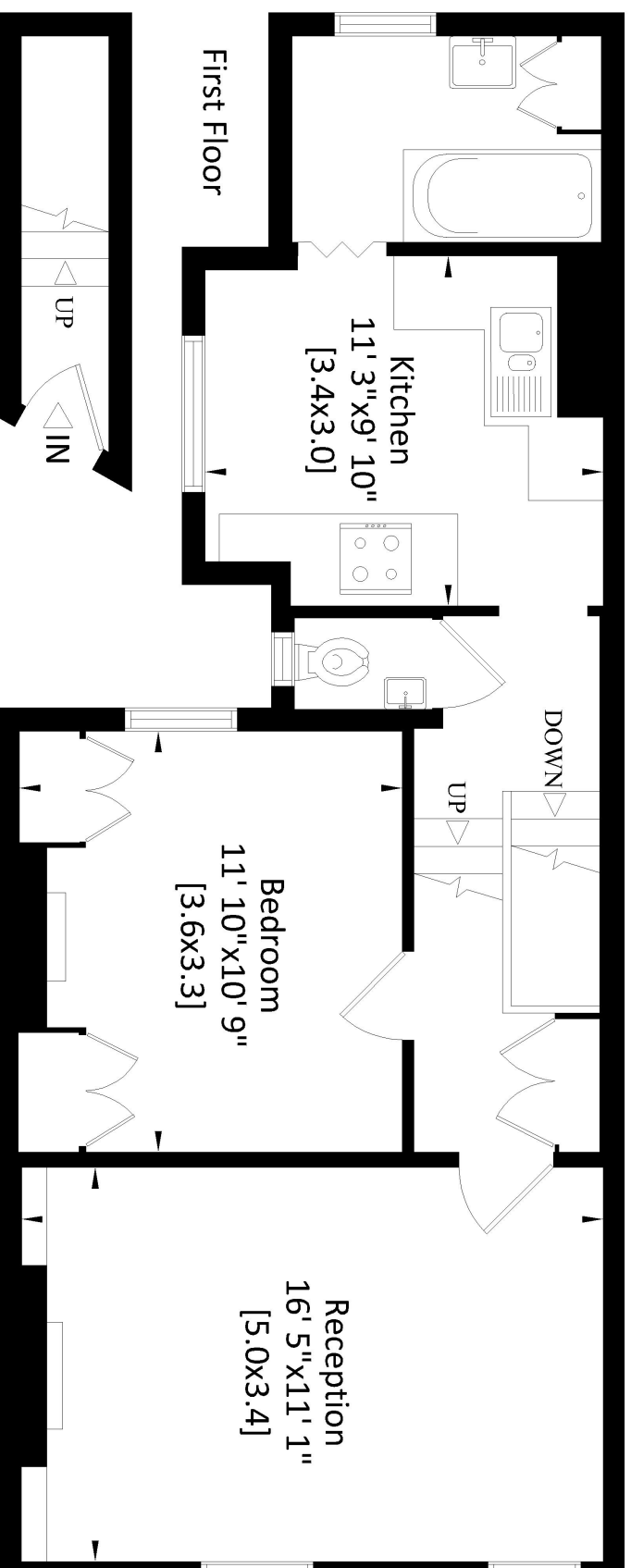


Grayshott Road SW11
Gross Internal Area:
56 Sq. metres - 601 Sq.feet



Whilst every attempt has been made to ensure the accuracy of this floor plan, measurements of doors, windows, rooms, angles and Sq. footage are approximate within 5% accuracy. For identification purposes only. Not to be used as part of the decision to buy. You must recheck all details before purchase and only purchase when you have confirmed them. Price on application for a 90 day licence to use this plan. No appliances tested. Not to scale. © 14082020. Floorplan, EPC, Virtual Tour and Photography by www.steele.london with the [UK's Number 1 Property Photographer Floorplanner](#) - Email: patricia@steele.london - Tel: 07847 219401